

PART OF THE SW. 1/4, OF SECTION 27, T.7N., R.1W., S.L.B. & M.
NORTHAMPTON ESTATES SUBDIVISION PHASE IV 2ND AMENDMENT

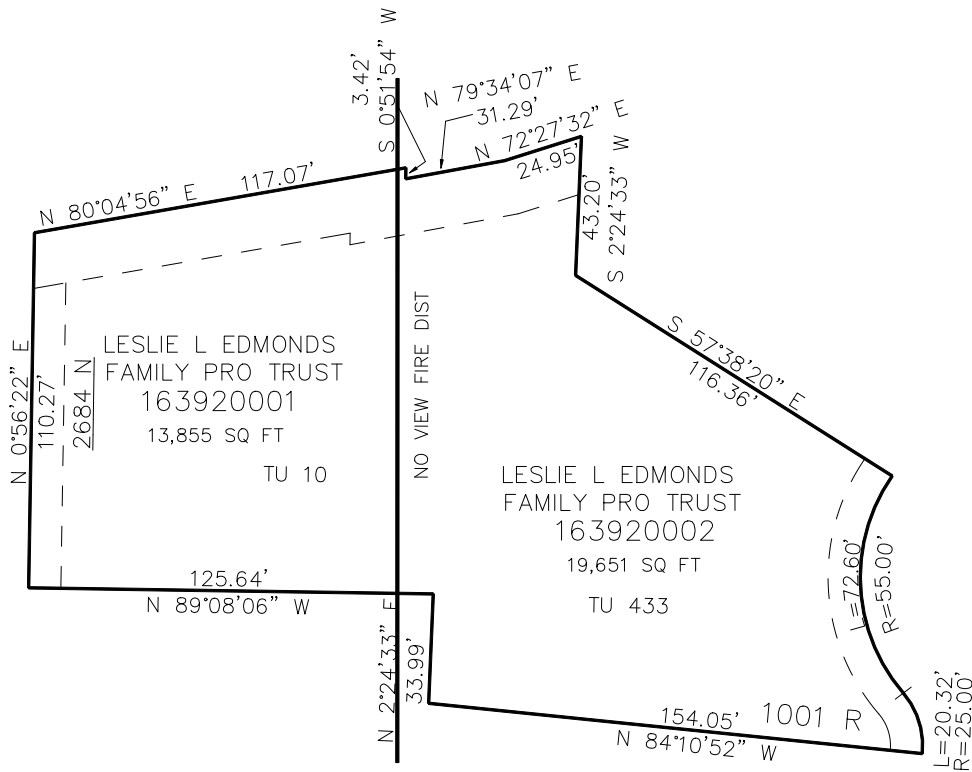
IN NORTH OGDEN CITY

TAXING UNIT: 10, 433

SCALE 1" = 30'

SEE PAGE 373

1325 EAST



1350 EAST STREET

10' UTILITY & DRAINAGE EASEMENTS EACH
 SIDE OF PROPERTY LINES AS INDICATED
 BY DASHED LINES EXCEPT AS OTHERWISE
 SHOWN.

FOR COMPLETE SURVEY DATA SEE
 ORIGINAL DEDICATION PLAT IN
 BOOK 93, PAGE 22 OF RECORDS.